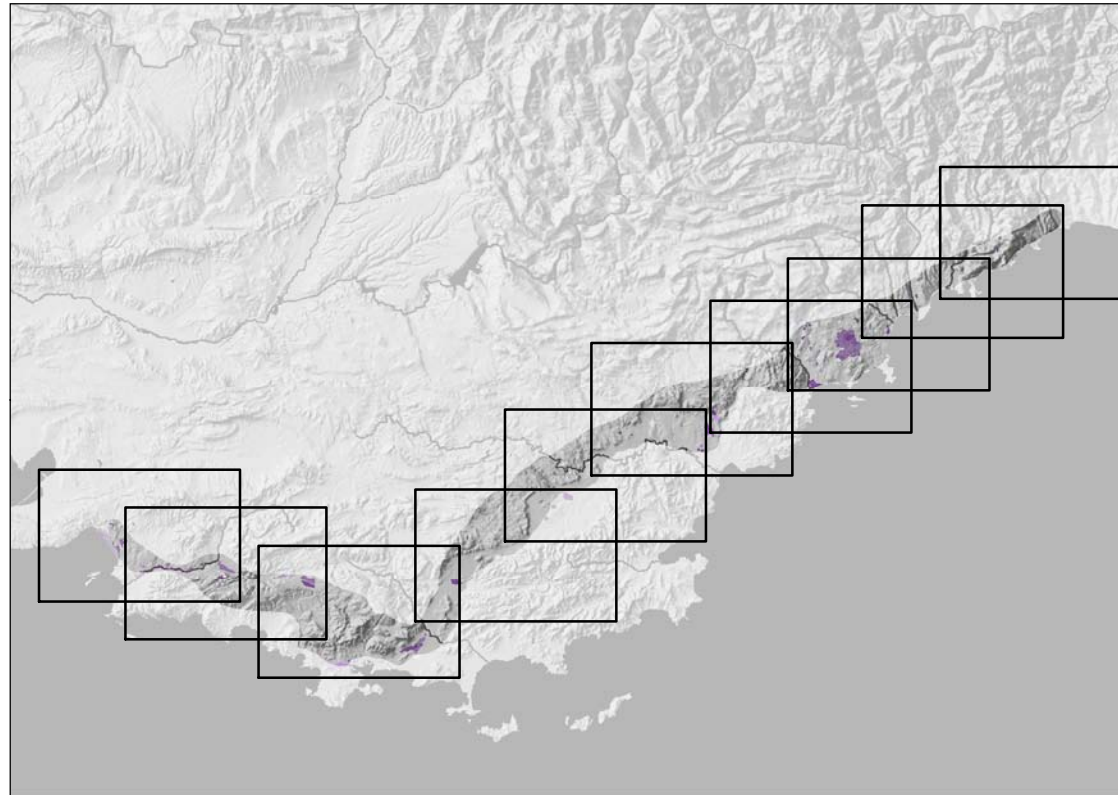






# ZONES D' ACTIVITES

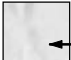
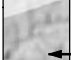
Ü

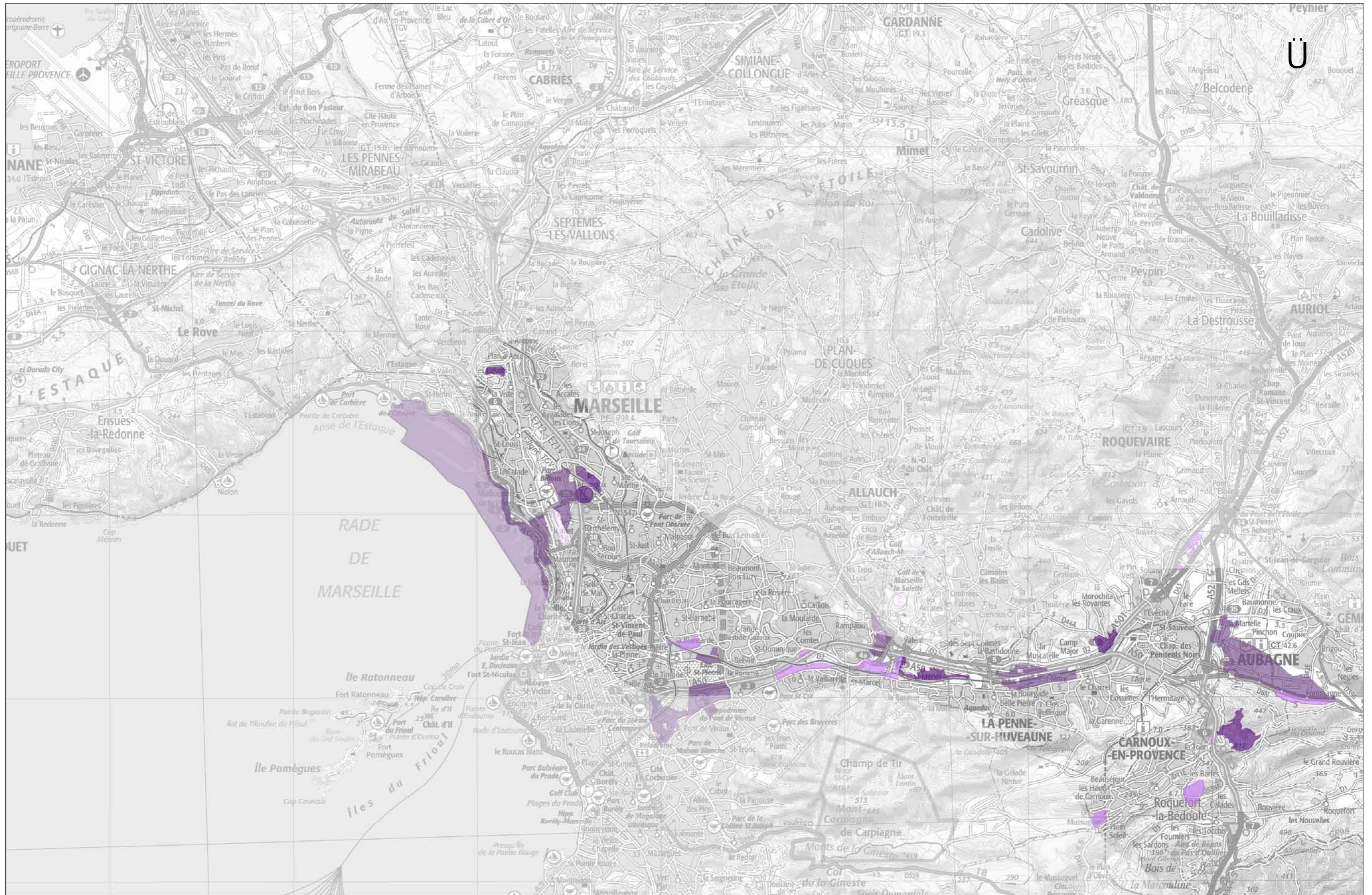


## Classification de la sensibilité

-  TRES DIFFICILEMENT ENVISAGEABLE
-  DIFFICILEMENT ENVISAGEABLE
-  MOYENNEMENT ENVISAGEABLE
-  ENVISAGEABLE

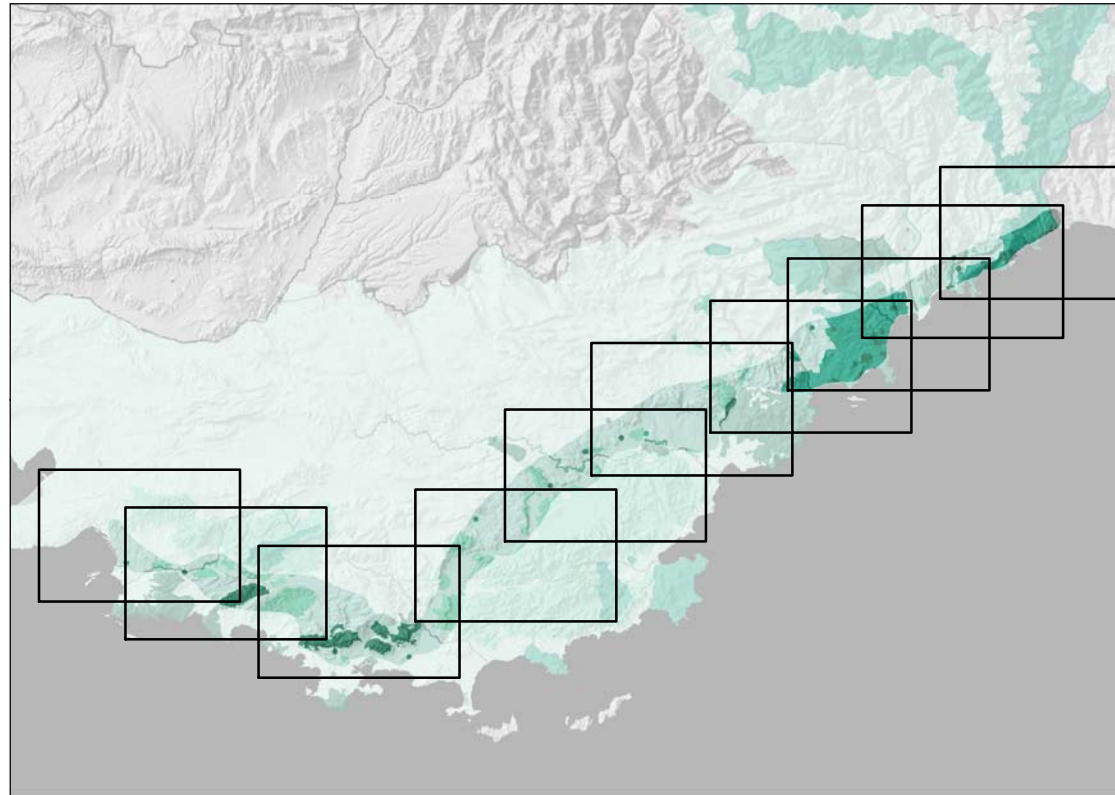
## Périmètres d'étude

-  ← Hors Zone d'étude préférentielle
-  ← Zone d'étude préférentielle

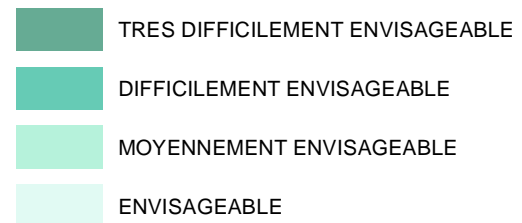


# PAYSAGE ET PATRIMOINE PROTECTIONS REGLEMENTAIRES

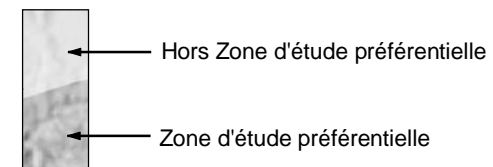
Ü

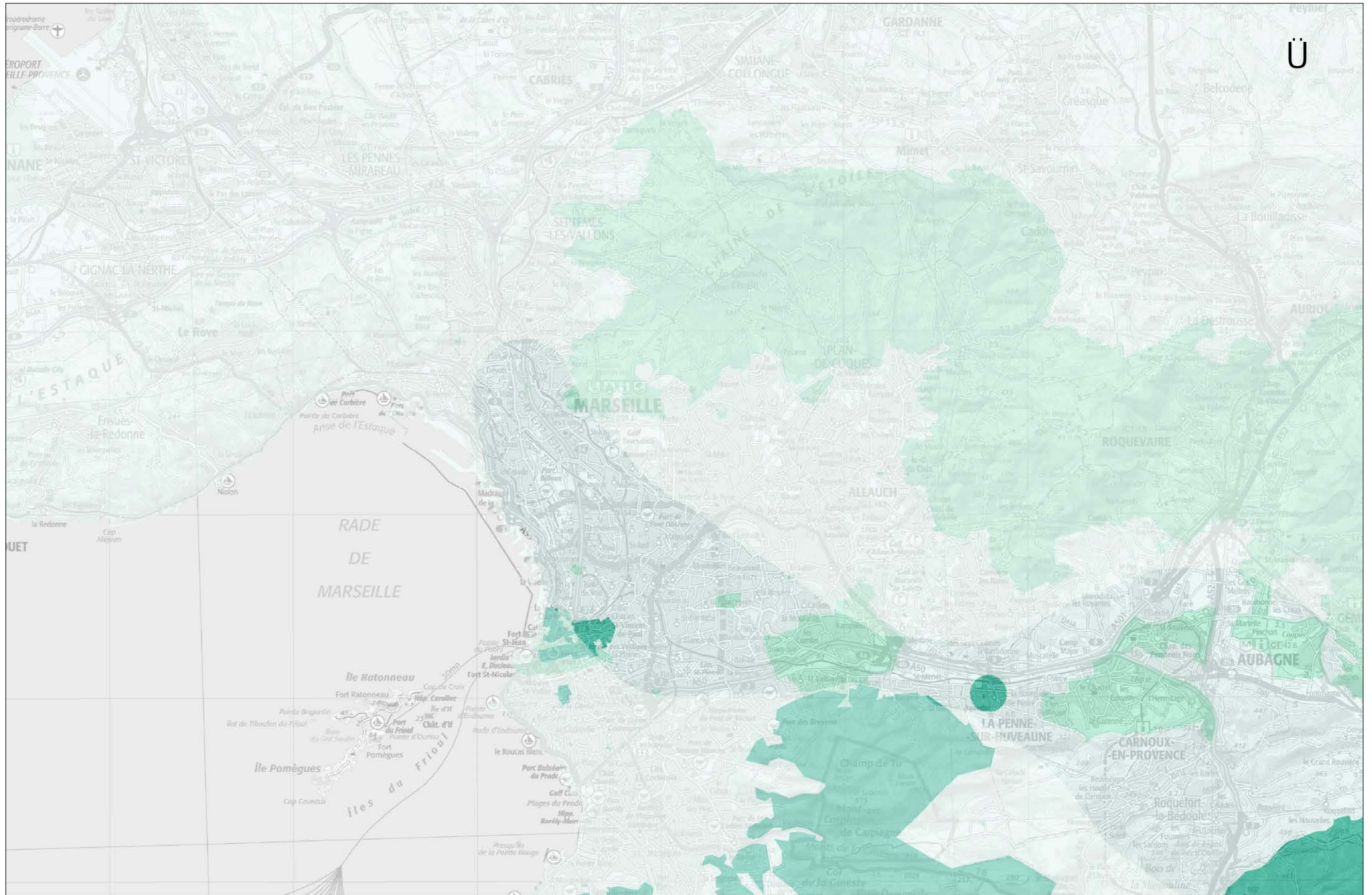


## Classification de la sensibilité



## Périmètres d'étude

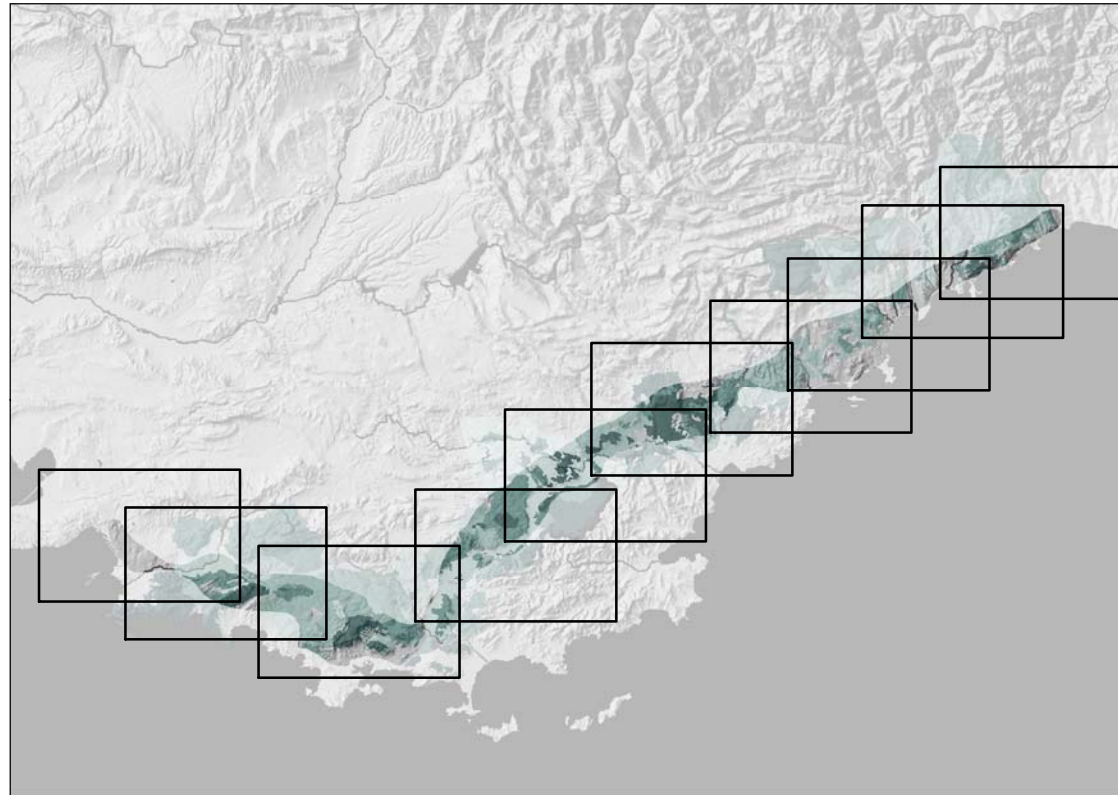








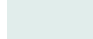
Ü

# MILIEUX NATURELS TERRESTRES



Ü

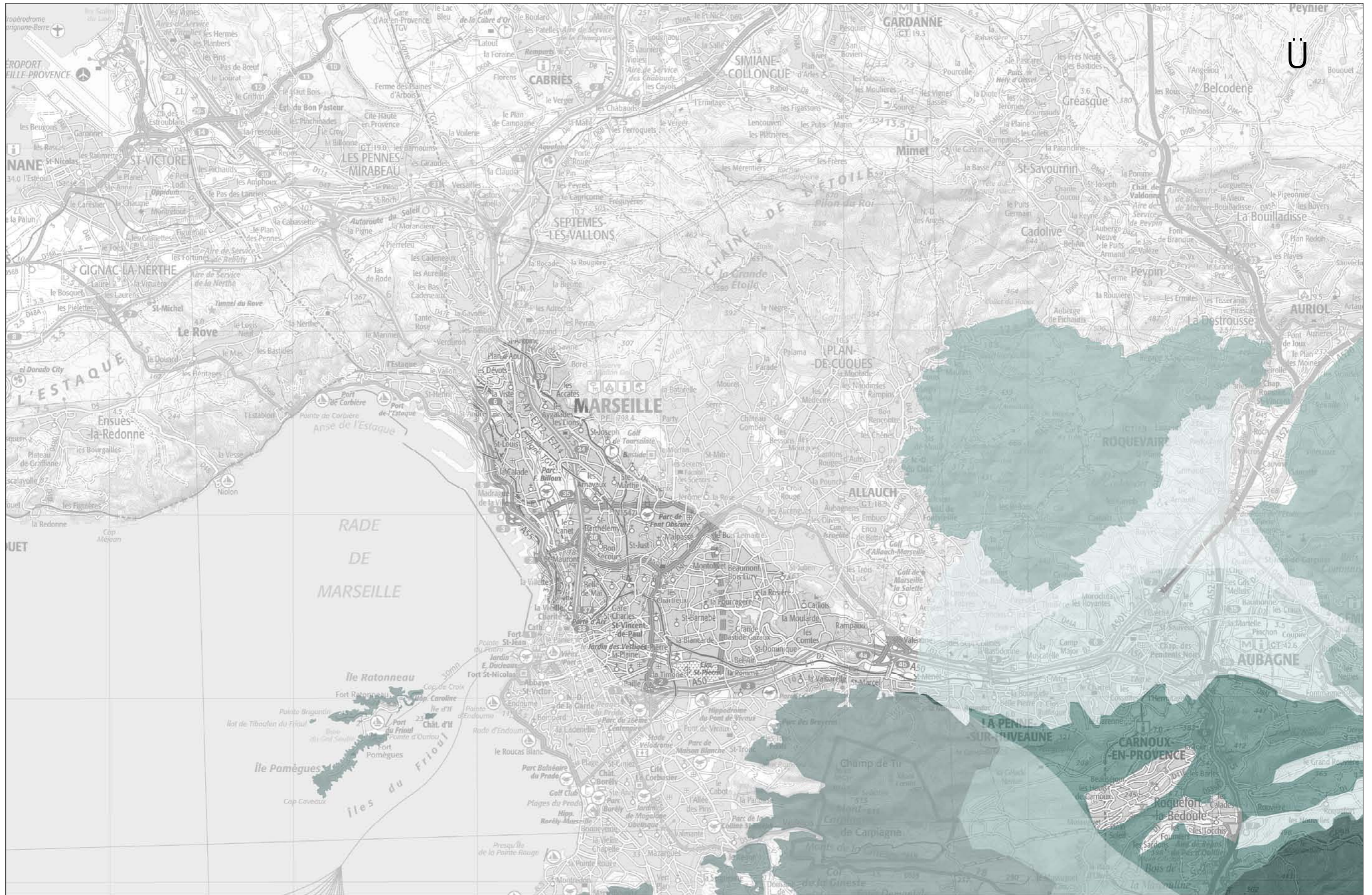


## Classification de la sensibilité

-  INENVISAGEABLE
-  TRES DIFFICILEMENT ENVISAGEABLE
-  DIFFICILEMENT ENVISAGEABLE
-  MOYENNEMENT ENVISAGEABLE
-  ENVISAGEABLE

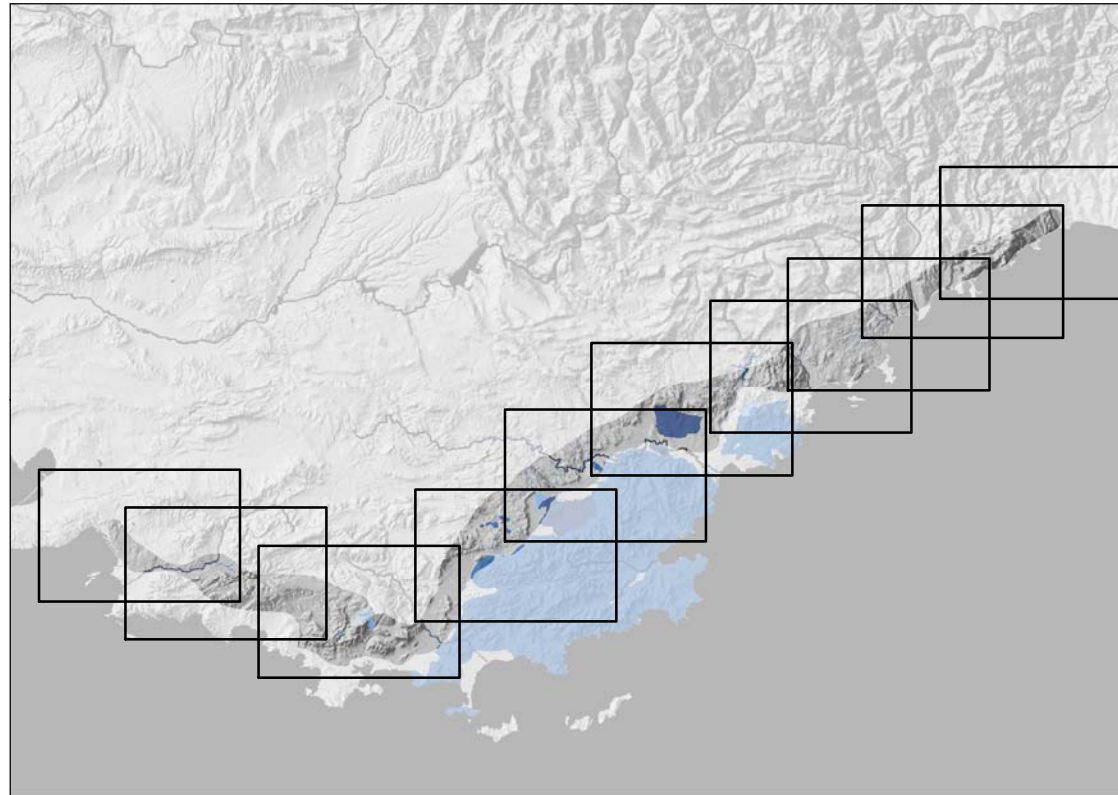
## Périmètres d'étude

-  ← Hors Zone d'étude préférentielle
-  ← Zone d'étude préférentielle




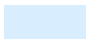


# MILIEUX NATURELS AQUATIQUES



Ü



## Classification de la sensibilité

-  TRES DIFFICILEMENT ENVISAGEABLE
-  DIFFICILEMENT ENVISAGEABLE
-  MOYENNEMENT ENVISAGEABLE
-  ENVISAGEABLE

## Périmètres d'étude

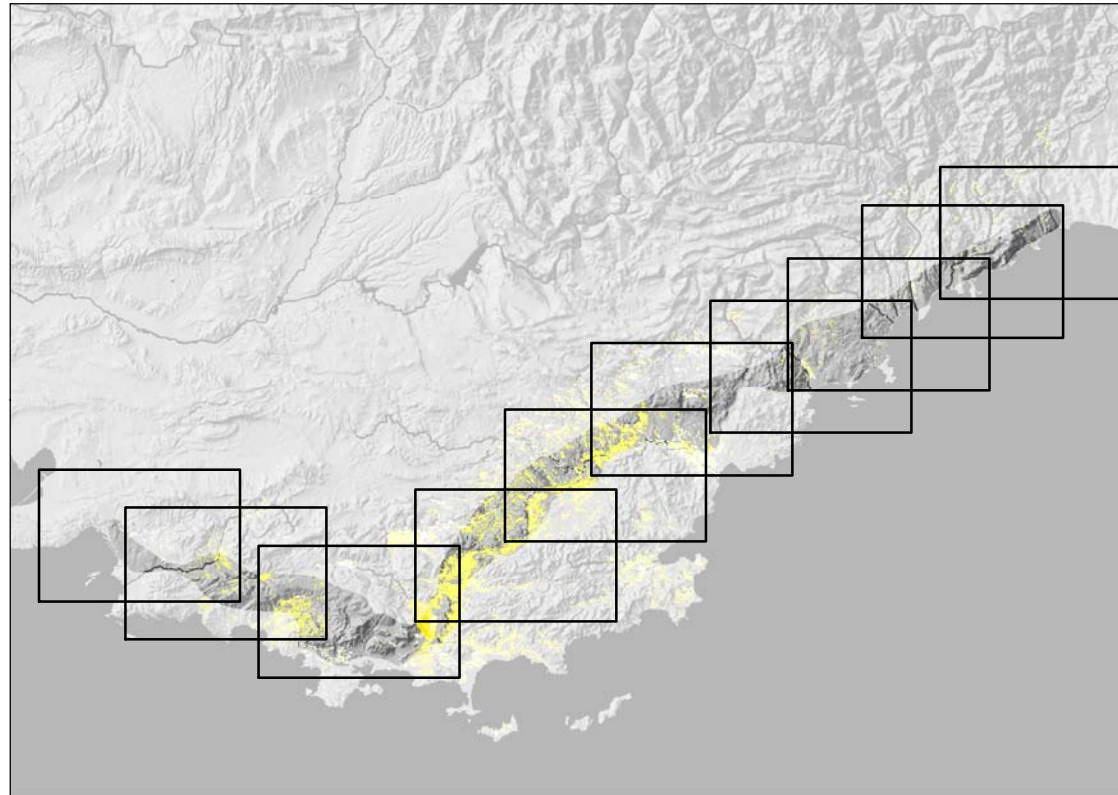
-  ← Hors Zone d'étude préférentielle
-  ← Zone d'étude préférentielle









# AGRICULTURE - VITICULTURE



Ü

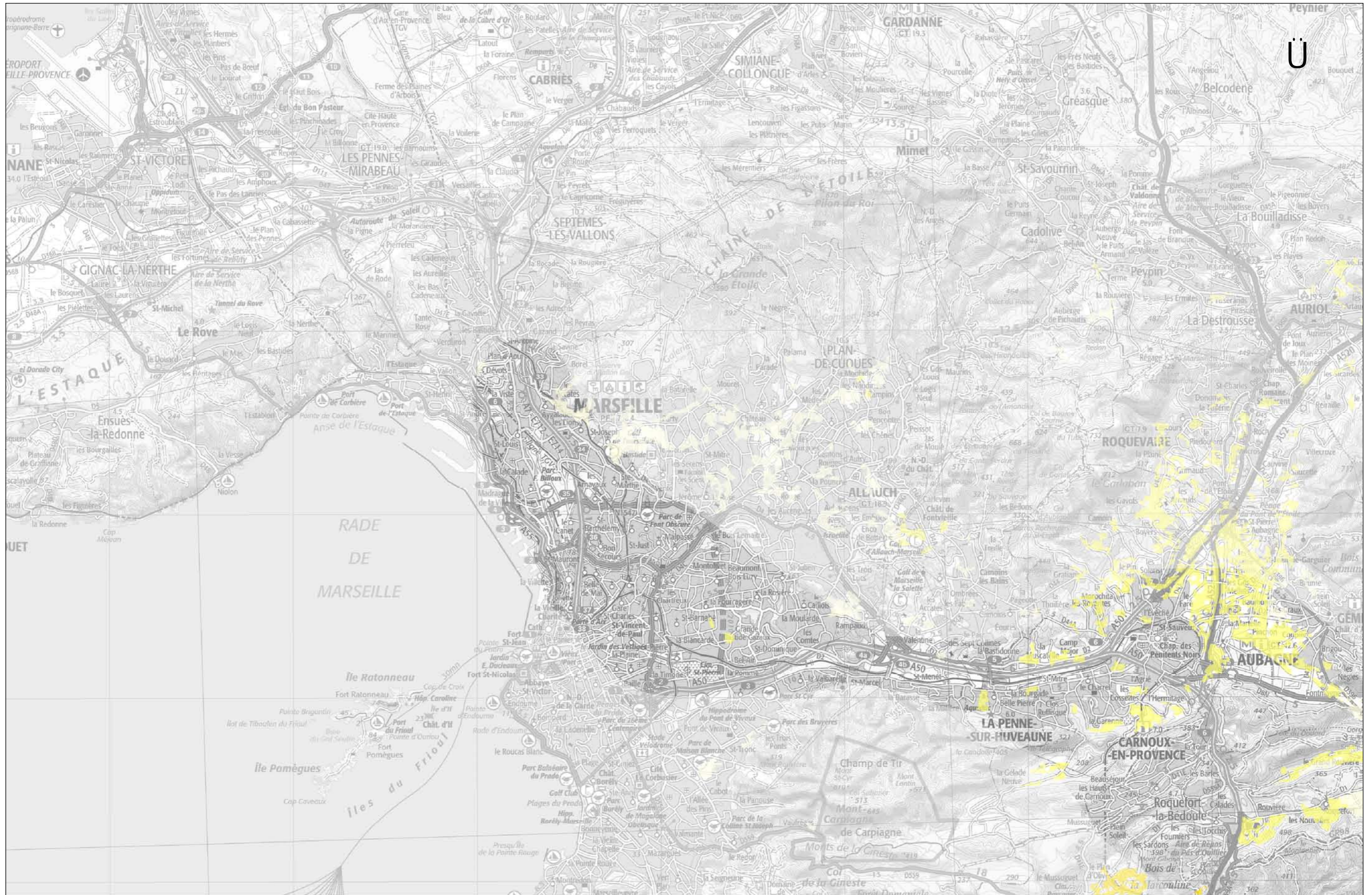


## Classification de la sensibilité

-  TRES DIFFICILEMENT ENVISAGEABLE
-  DIFFICILEMENT ENVISAGEABLE
-  MOYENNEMENT ENVISAGEABLE
-  ENVISAGEABLE

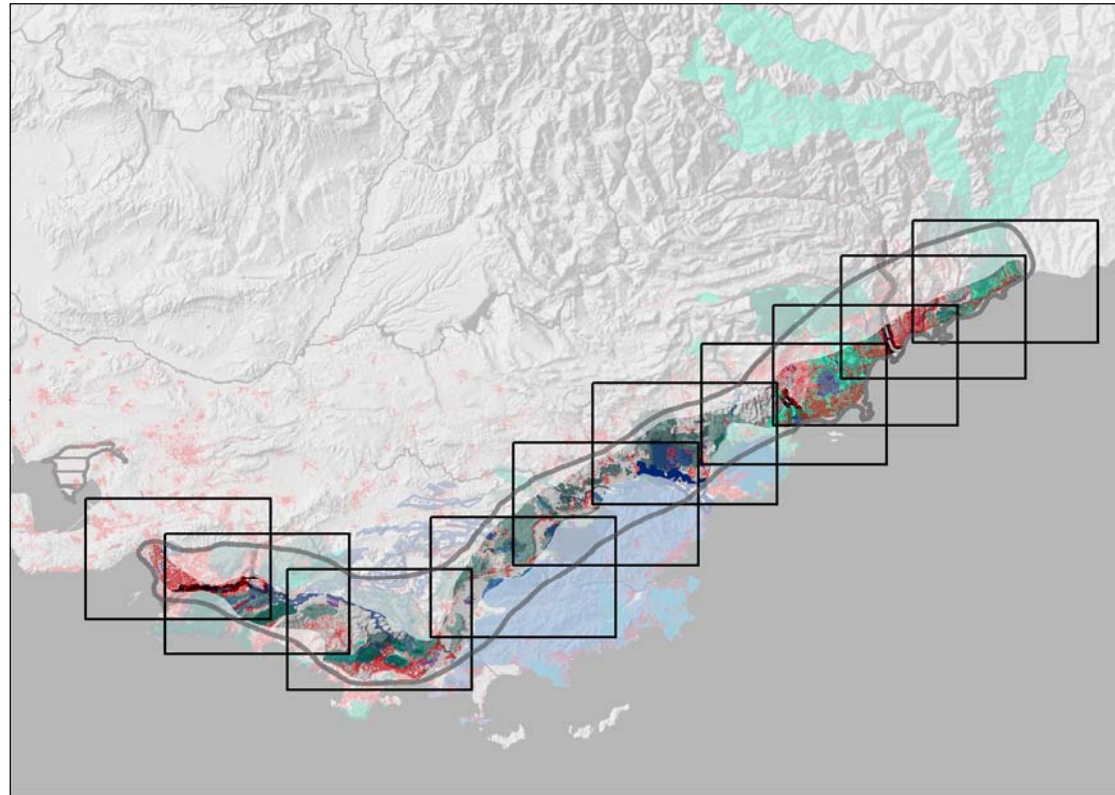
## Périmètres d'étude

-  ← Hors Zone d'étude préférentielle
-  ← Zone d'étude préférentielle




Ü


# SENSIBILITES PAR TERRITOIRE



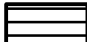
## Zone inondable

 Laisse de crue de l'Argens en 2010

## Géologie


 Formations karstiques


## Principales vallées alluviales (nappes + inondabilité)

 Var, Huveaune et Siagne

## Périmètres d'étude

 Hors Zone d'étude préférientielle

 Zone d'étude préférientielle

 Limite aire d'étude

## Agricoles

 TRES DIFFICILEMENT ENVISAGEABLE


 DIFFICILEMENT ENVISAGEABLE


## Activités

 TRES DIFFICILEMENT ENVISAGEABLE

 DIFFICILEMENT ENVISAGEABLE

## Bâti

 TRES DIFFICILEMENT ENVISAGEABLE

 DIFFICILEMENT ENVISAGEABLE

## Milieux naturels aquatiques

 TRES DIFFICILEMENT ENVISAGEABLE

 DIFFICILEMENT ENVISAGEABLE

## Milieux naturels terrestres


 INENVISAGEABLE

 TRES DIFFICILEMENT ENVISAGEABLE

 DIFFICILEMENT ENVISAGEABLE

## Paysages et Patrimoines

 TRES DIFFICILEMENT ENVISAGEABLE

 DIFFICILEMENT ENVISAGEABLE

